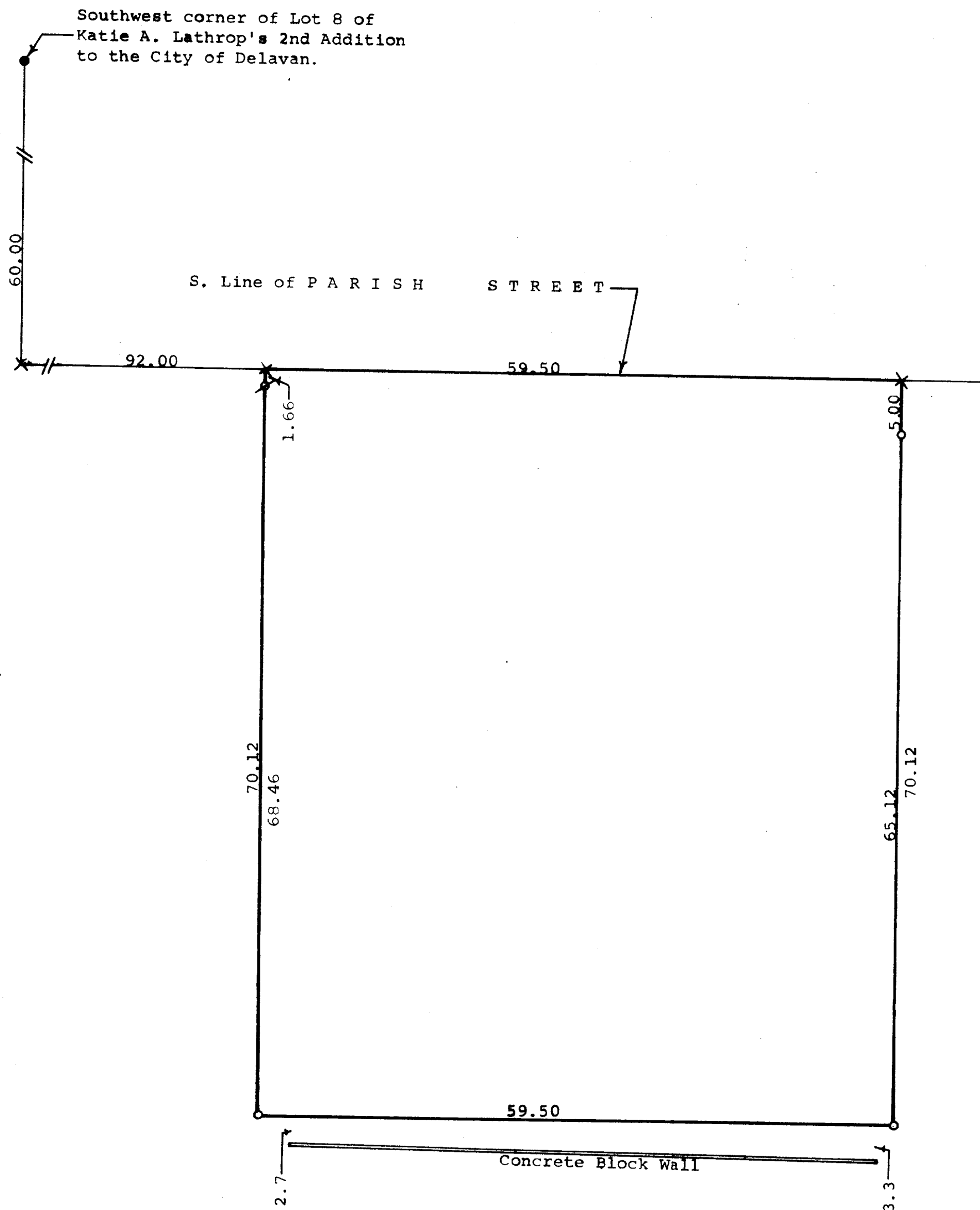


GEORGE T. DUNHAM
SURVEYING & SUBDIVIDING
DELAVAN, WISCONSIN



Plat of survey of a parcel of land described as follows,
A parcel of land located in the Northwest $\frac{1}{4}$ of Section 17,
T 2 N, R 16 E, City of Delavan, Walworth County, Wisconsin,
described as follows: Commencing at the southwest corner of
Lot 8 of Katie A. Lathrop's Second Addition to the City of
Delavan as platted and recorded with the Register of Deeds in
and for Walworth County, Wisconsin; thence South along the
east line of Seventh Street 60 feet to a point in the south line
of Parish Street; thence East along the south line of Parish
Street 92 feet to the place of beginning; thence continue along
the south line of Parish Street, 59.50 feet to a point; thence
South parallel with the east line of Seventh Street 70.12 feet to
a point; thence West parallel with the south line of Parish Street
59.50 feet to a point; thence North parallel with the east line of
Seventh Street 70.12 feet to a point and the place of beginning.
October 22, 1975

George T. Dunham
George T. Dunham, Surveyor

